

Visual Inspection and Documentation of Automotive Parts for Surface Defects

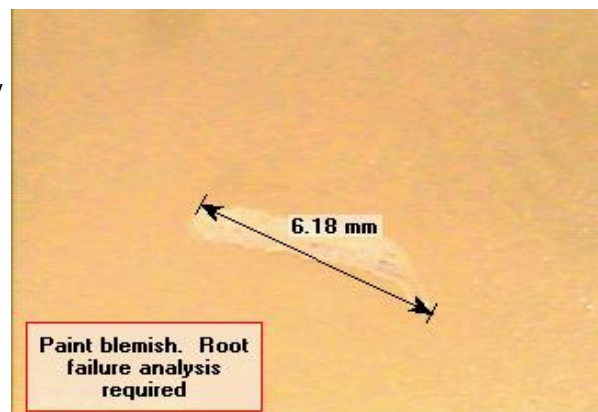
Inspection of automotive parts for surface defects prior to, and after the painting process has never been easier or more affordable than with the new HandiScope™ hand-held portable microscope. The light weight (0.5 lb) HandiScope™ enables the close-up inspection of surface areas either on the production line or in the quality control laboratory. The standard 20x50 selectable magnification lens enables close inspection, however, if greater magnification is desired, 100x and 200x lenses are available.

The video output allows for real-time viewing on any video input device such as a TV or LCD projector. The image can be “freeze framed” on the monitor for closer inspection or for discussions with quality control or production line personnel. It is also ideal for use as a visual aid during training classes giving real-time images of the subject matter being discussed. The optional iCapture software allows the user to perform measurements of the image, insert annotations and enhance and rotate the images for better viewing.

For documentation purposes the images can be downloaded and stored as standard BMP, JPG, TIF, PNG or GIF files.

Applications:

- Surface Preparation
- Paint Continuity
- Quality Control
- R&D
- Training
- Documentation



Specifications:

Image Capture Element: 1/4" CCD with Complimentary Color Filter

Total Image Element: 811(H) x 507(W)

Refresh Rate: 30 Frames/second

Magnification: 20x/50x Selectable

Viewing Area (mm): 14x10.5/6x4.5

Lighting: Internally Contained, 8 White LEDs

Focus Distance: 0mm (contact) or 26mm (non-contact)

Output: Standard NTSC, VBS IV[p-p]/75 ohm

Interface: Standard RCA

Power Supply: 5V, 3A output

90-250 V, 50-60Hz AC Input

Dimensions: Approx. 9 inches long x 2 inches diameter

Weight: Approx. 0.5 pounds

431 Ohio Pike, Suite 192 South • Cincinnati, OH 45255
1.888.237.9883 • 513.688.1351 • fax 513.688.1361. • Email reasley@fuse.net
www.conferencepro.com